

# VISIOCONTROL

## VC 1000



Remote ↔

# VISIOCONTROL VC 1000

Fieldbus

- ↔
- PROFIBUS
  - MODBUS

LAMTEC SYSTEM BUS

LAMTEC SYSTEM BUS

## Boiler Protection

- Water level monitoring
- Water quality monitoring
- Pressure monitoring
- BosB Mode

## Burner Management System

- BT300
- ETAMATIC OEM
- ETAMATIC
- FMS

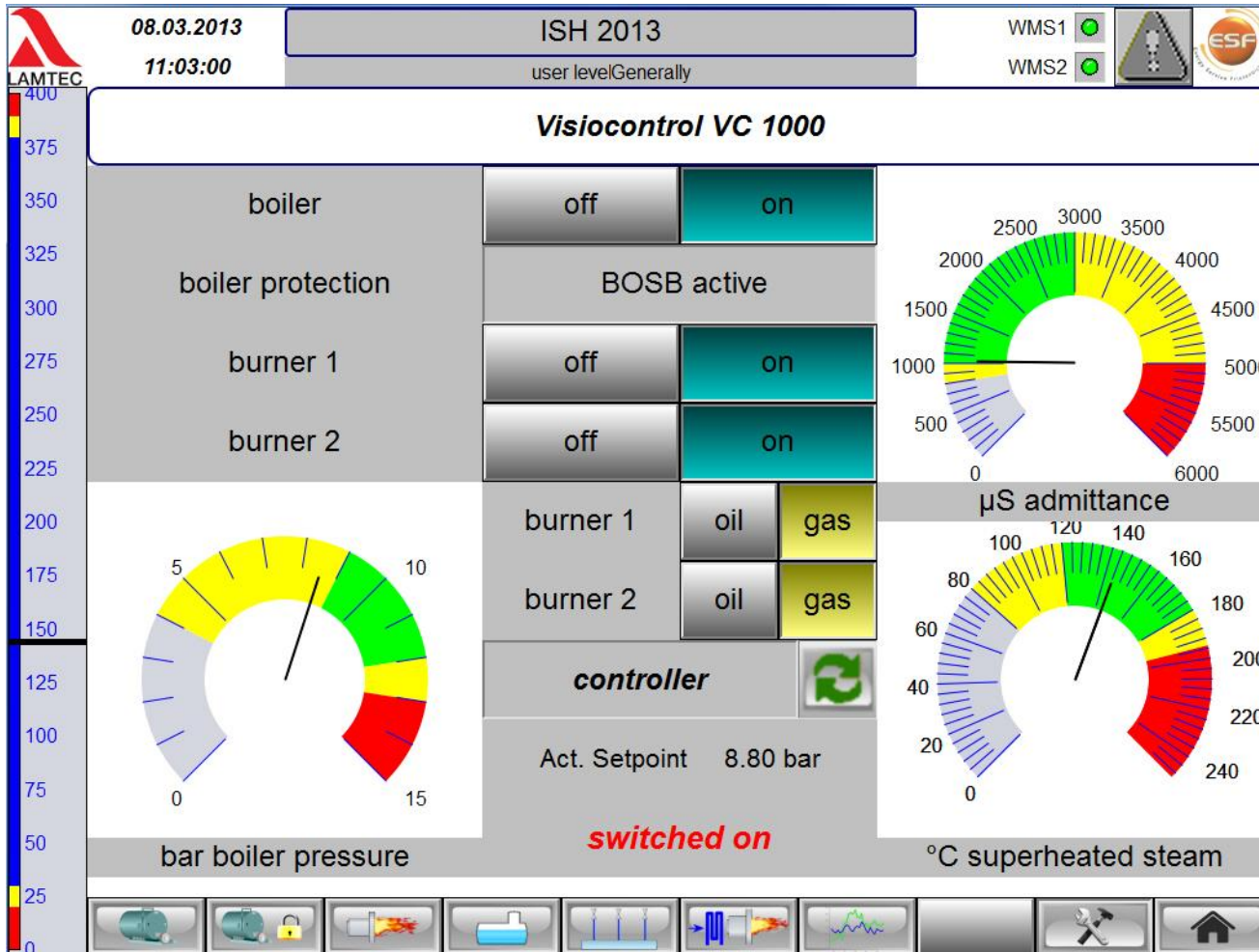
## Boiler Control System

- Feedwater Control
- Feedwater pump control
- Continuous blow down
- Intermittent blow down

## Boiler Components

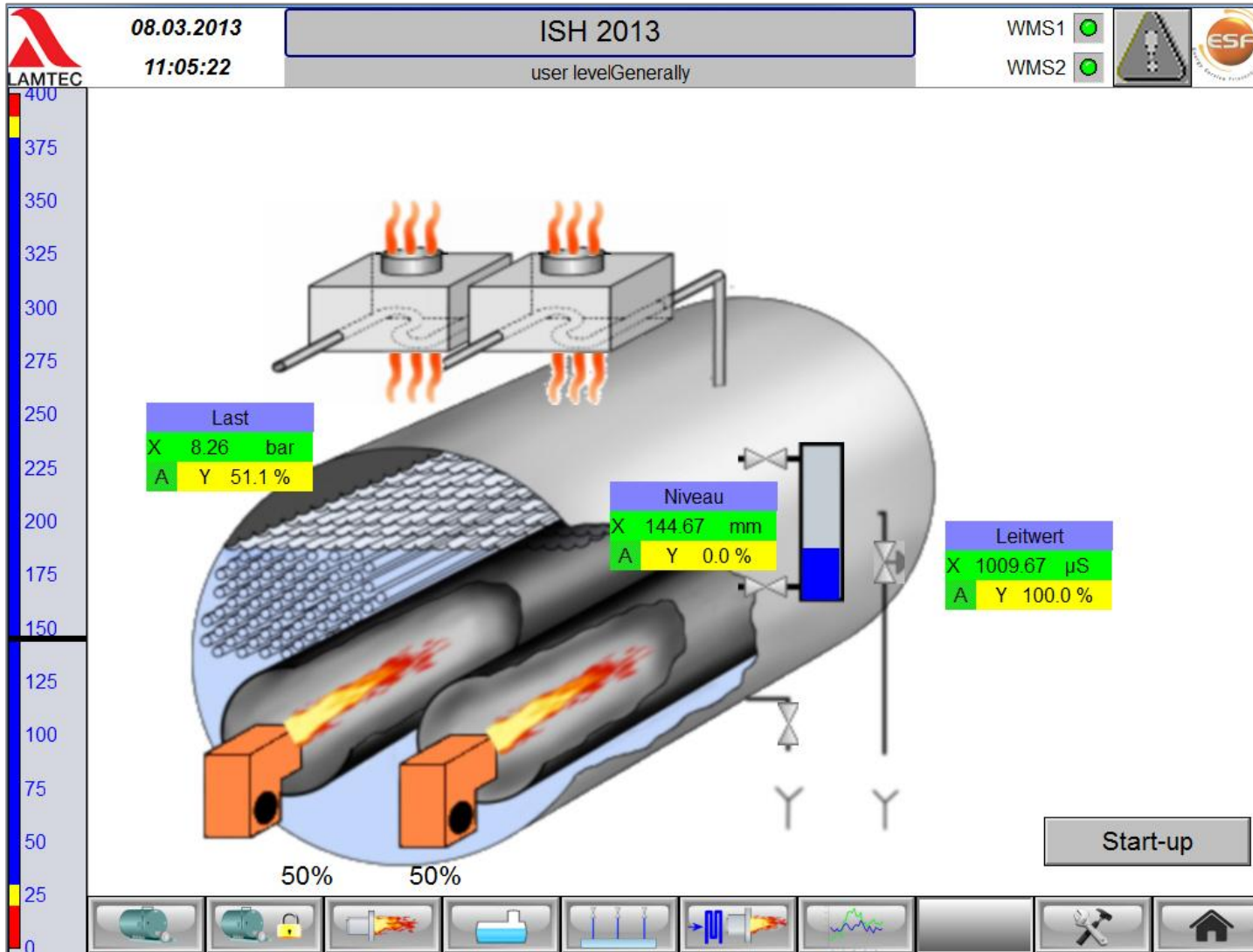
- Feedwater supply
- Steam distribution
- Combustion air preheating





- > All important operation data at a glance
- > Simple branch to detail pages
- > Symbol based user level

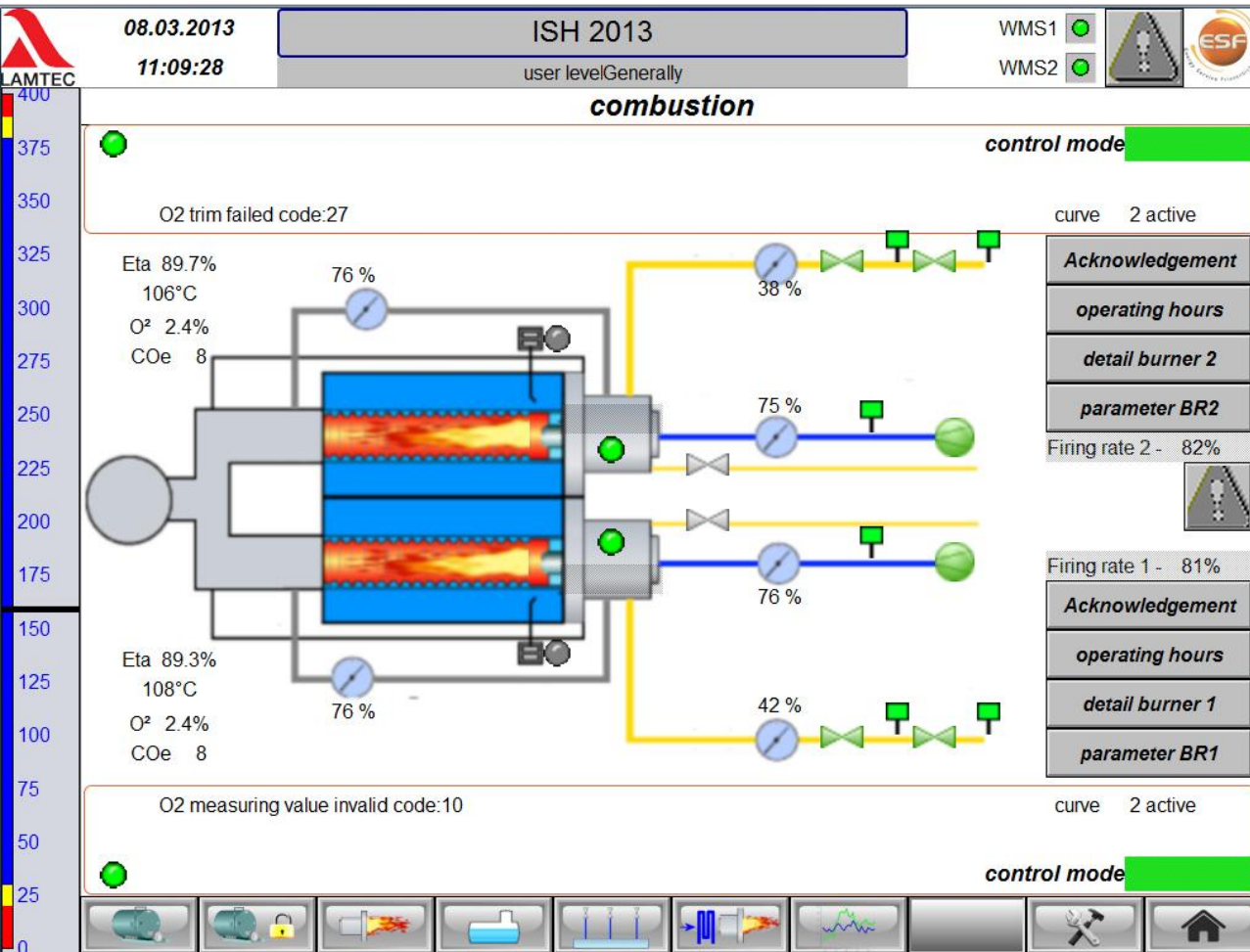
# Boiler Display



Different boiler images are stored in the system. During commissioning the customer can arrange menu-assisted the appropriate boiler and additional modules.

He can choose between the following systems:

- Flame-tube boiler
  - Hot water boiler (one or two burners)
  - Steam boiler
- Water-tube boiler

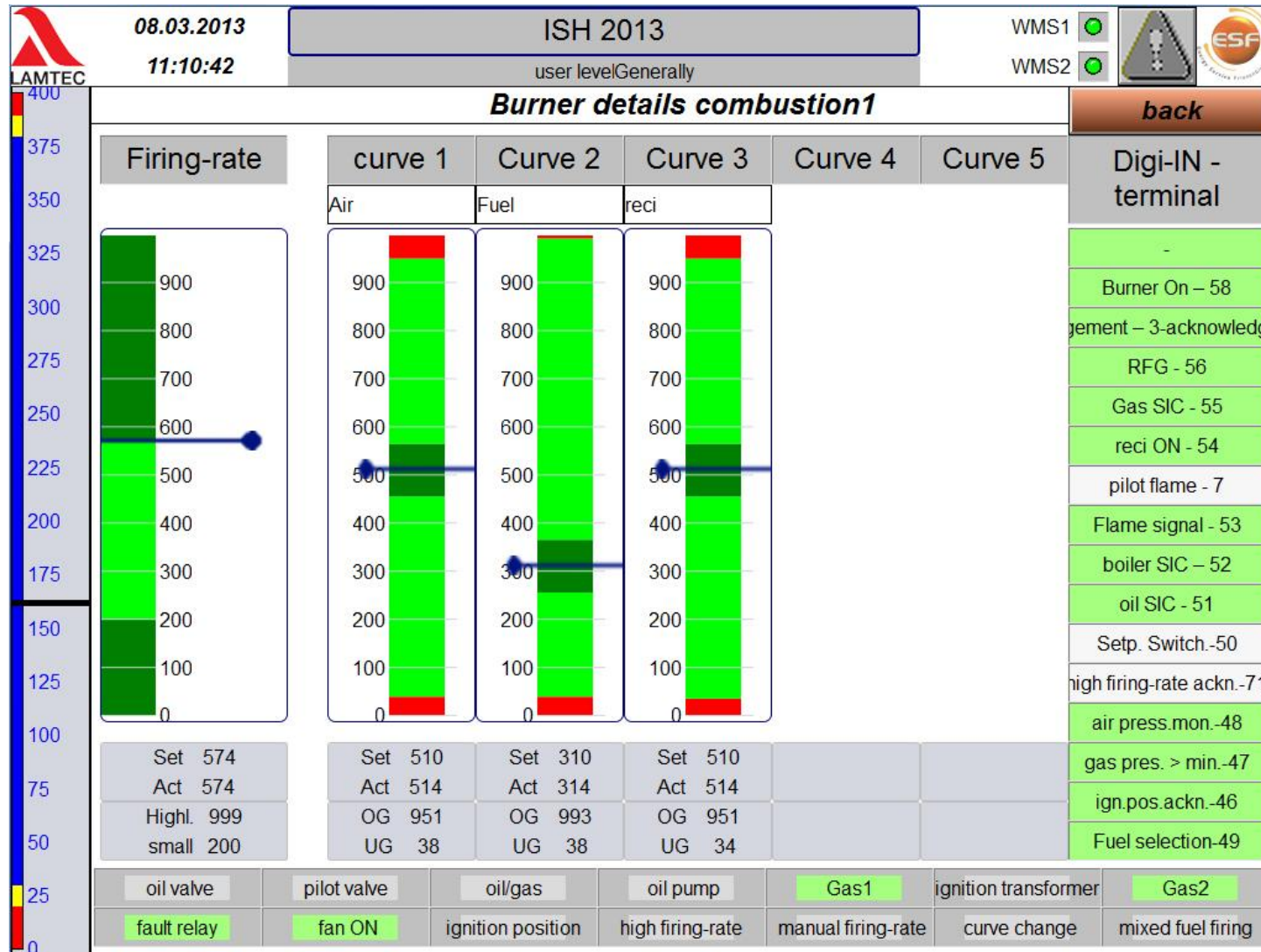


VISIOCONTROL VC1000 is able to read out burner specific data via LAMTEC SYSTEM BUS.

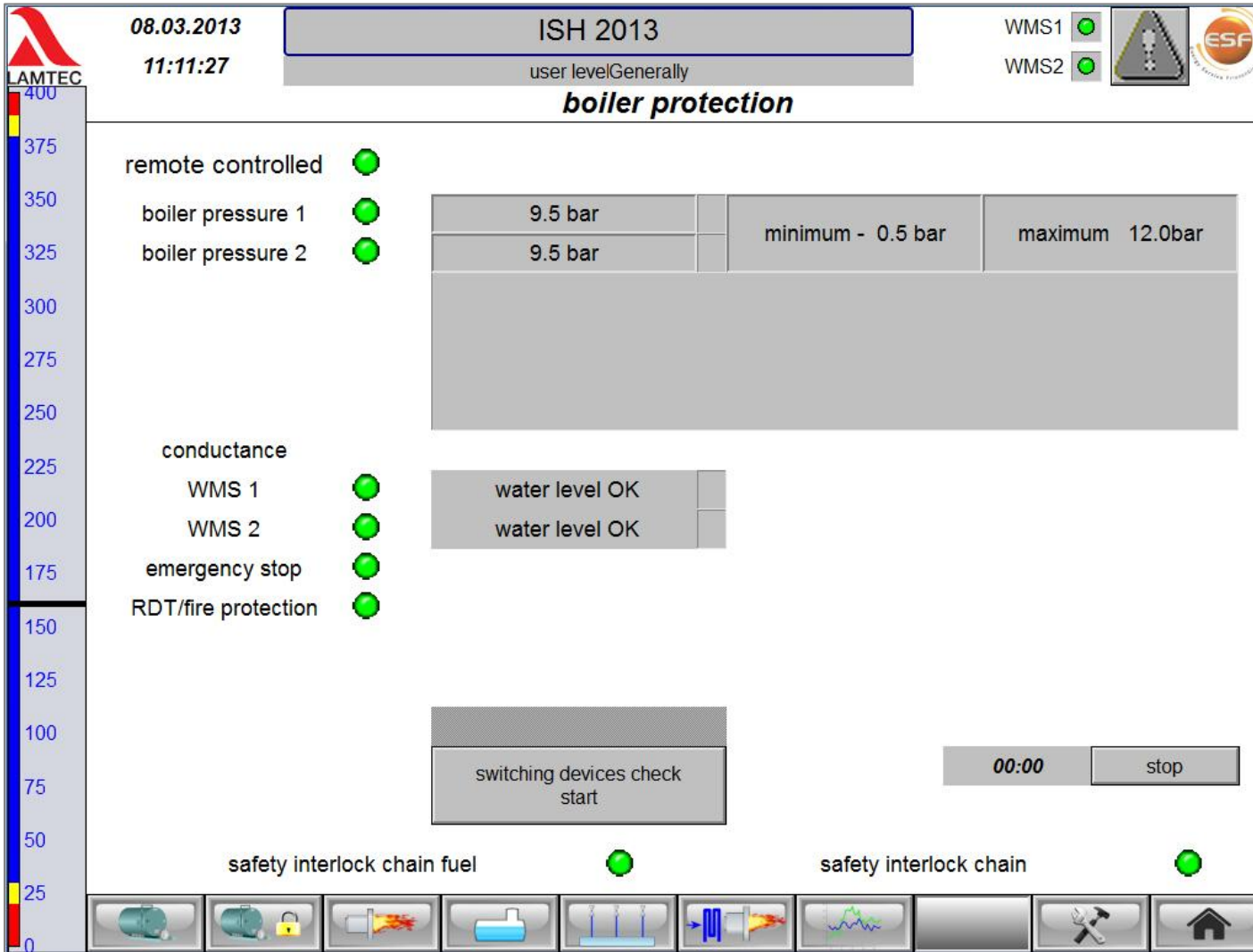
This is enabled by parameter settings of the BMS

After reading the data the burner image will be arranged automatically.

# Combustion - Detail



On the detail window of combustion p. ex. flap positions can be displayed or digital inputs and outputs and the actual value of firing rate for each individual burner.



The boiler protection will be built according to directives and regulations. Main functions:

- Water level monitoring
- Water quality monitoring
- Temperature monitoring
- Pressure monitoring
- BosB mode

# Controller settings

08.03.2013 11:13:03 ISH 2013 user levelGenerally WMS1 WMS2

PID No.:1 PID No.:2

PID No.:1

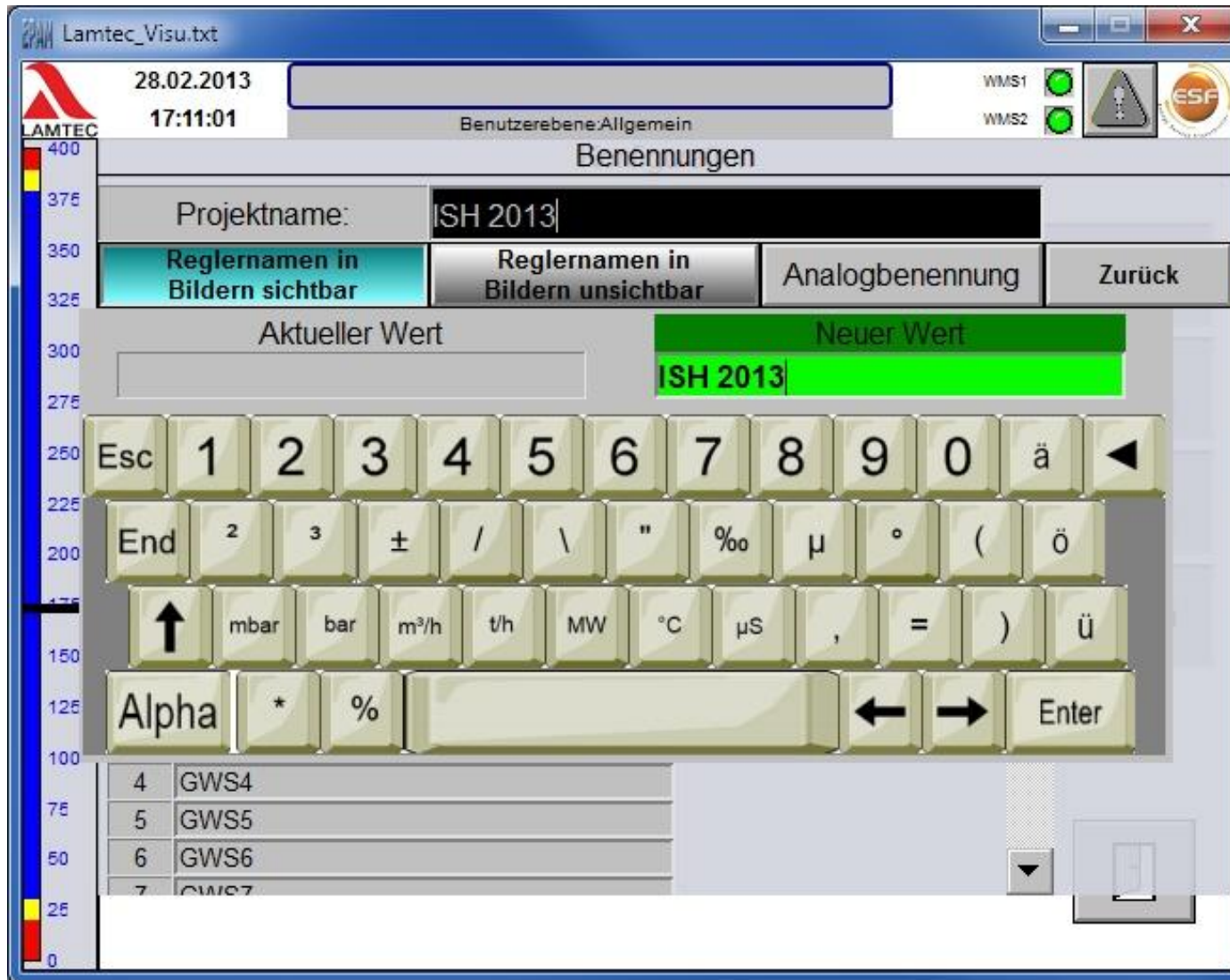
Last

actual value	9.36 bar
setpoint value int.	8.80 bar
setpoint value ext.	
setpoint value active	8.80 bar
Firing-rate value	0.0 %
automatic	

PID-Para trend

controller group A controller group B safety interlock chain

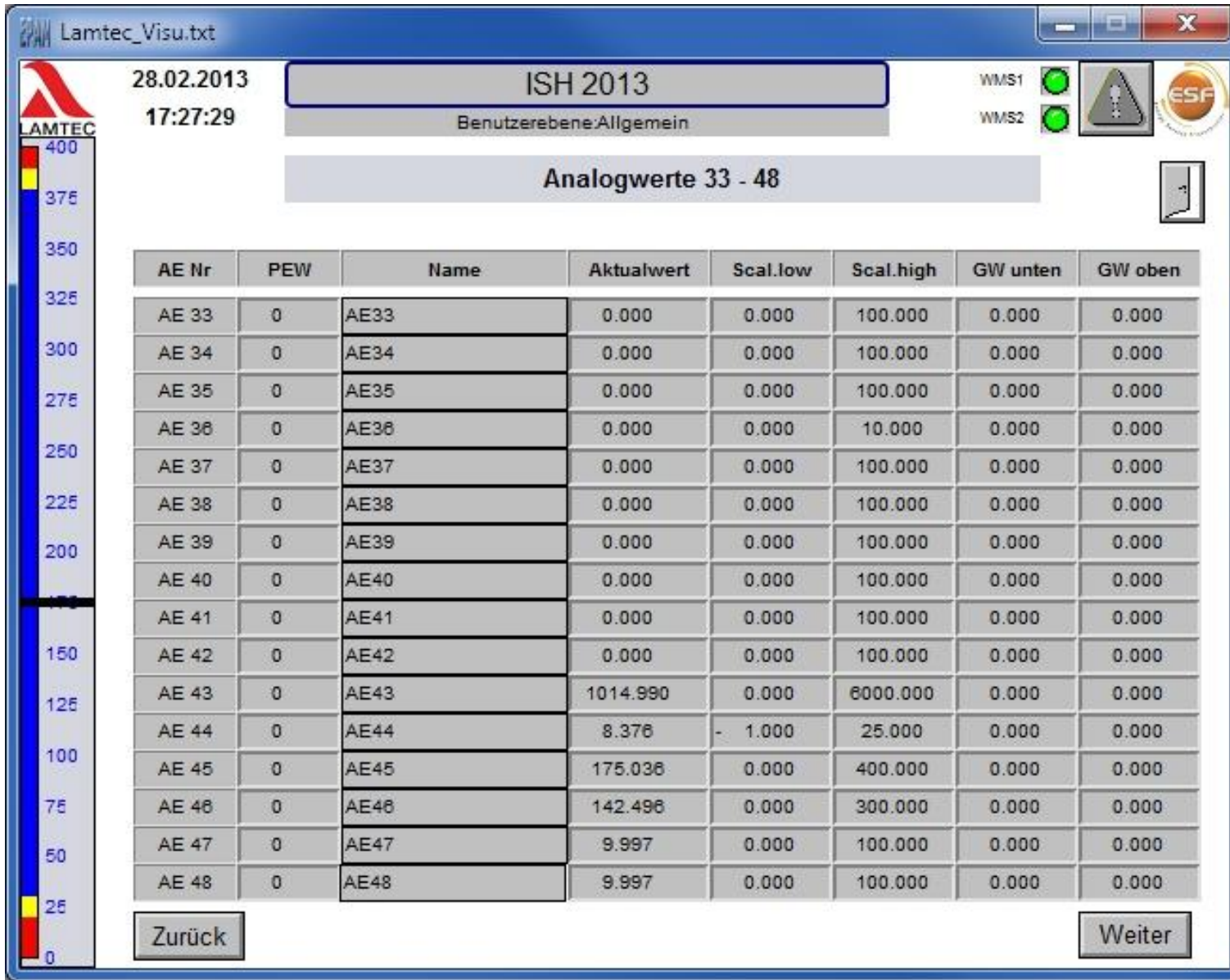
It is easy to adjust controllers with the help of the menu.



The project specific data can be displayed and entered at configuration level.

Data and settings are secured by passwords for different user levels.

# Analogue value



Input and output modules are used to read the signals in and out. They can be freely set in the configuration level.

## Advantages:

- › The complete plant in one system
- › One standard user interface
- › Everything from one source – no problems with interface
- › No programming or SPS knowledge necessary for adjusting VISIOCONTROL VC 1000 to the plant

Thank you for your attention

Questions?



## Contact:

Ralf Lakatos –Sales Manager-

Phone: +49 (0) 6227 / 6052-40

Fax: +49 (0) 6227 / 6052-57

E-Mail: [lakatos@lamtec.de](mailto:lakatos@lamtec.de)

